

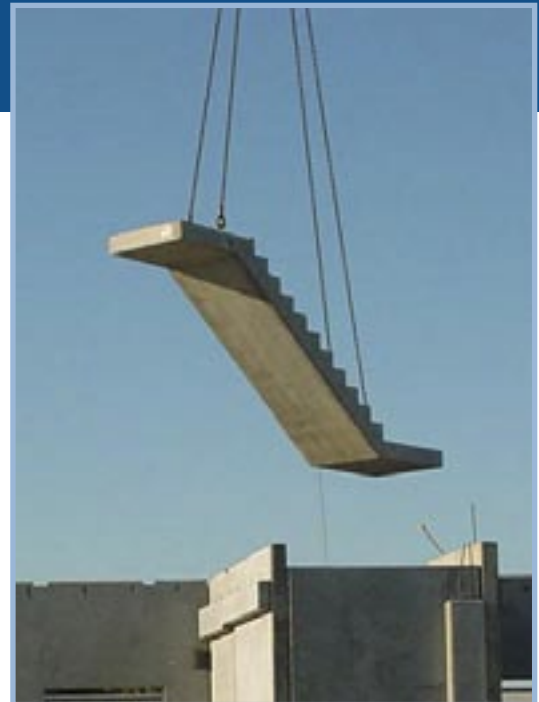
Precast Concrete Stairs

Hollow Core Concrete has developed highly sophisticated fabrication techniques to manufacture prefinished stair and landing components as complete, ready to install units.

A number of building projects are utilising these ready to install components including Mirvac's Yarra's Edge development at Melbourne's Docklands precinct, the newly renovated Melbourne GPO, Melbourne's Sports and Aquatic Centre and numerous other projects.

The advantages of prefabricated stair and landing components are:

- They are extremely simple and quick to install, providing immediate access to floors, and are therefore ideal for any construction sequence.
- Hollow Core Concrete stairs are economical in comparison to other stair solutions such as metal frame systems that require considerable on-site casting.
- These units eliminate the need for formwork, allowing following trades immediate access.
- Hollow Core Concrete delivers its stair components complete with anchoring points ready for installation onto corbels or other support elements. It is simply a matter of lifting them into place!



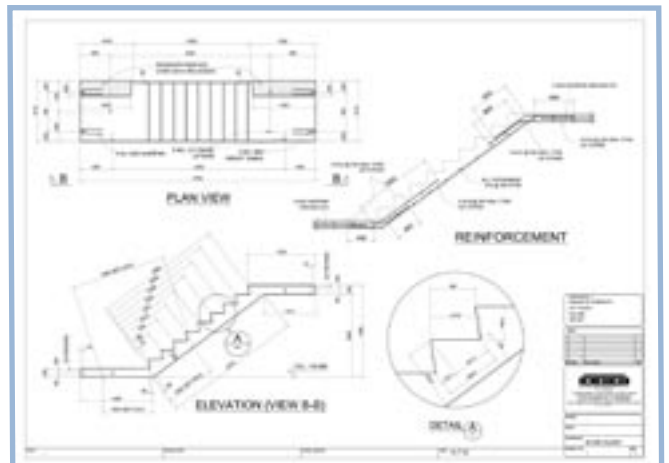
Hollow Core Products A Complete Service

Hollow Core products can be designed, manufactured and installed by us, as part of our commitment to providing an economical and total structural solution.

From the initial concept through to its design and installation, Hollow Core offers a complete service that can be tailored to meet specific structural requirements.

Hollow Core products have many benefits, these include:

- Factory casting
- Reduced on-site labour
- Rapid construction
- Design flexibility
- Durability
- Fire resistance
- Manufactured to Australian Standards



For further information, please contact:

JMA9005



P.O. Box 241, Altona North, Vic 3025. 12-14 Maria Street, Laverton North, VIC 3026, Australia.
Tel: +61 3 9369 4944 Fax: +61 3 9369 2025 Email: info@hollowcore.com.au Web: www.hollowcore.com.au